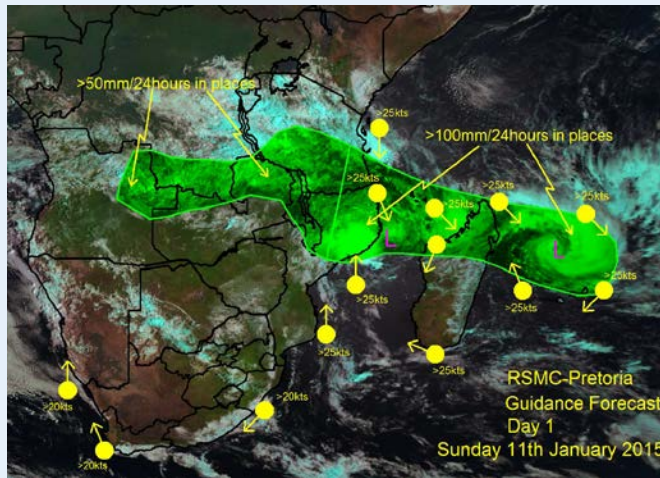


SWFDP/SARFFG Regional Technical Meeting and User/CONOPS Workshop

Ezekiel K. Sebego
Chief Forecaster: RSMC Pretoria

RSMC PRETORIA ROLE IN SWFDP-SA



- Started with demonstration in 2007, now operational
- NWP/EPS products provided by Global Centres NCEP, UKMO and ECMWF.
- LAM from RSMC PTA
- RSMC forecaster provides daily guidance for 5 days ahead.
- Heavy rains (50mm, 100mm and 150mm/24hours).
- Strong winds (>20kts)
- Rough seas (>2m)
- Extreme temperatures
- Probabilistic forecast
- Satellite-based now-casting products
- **No flash flood guidance**

RISK	No risk	Low risk	Medium risk	High risk	No risk	Low risk	Medium risk	High risk
	Heavy Rain				Strong Winds			
Angola		NE			X			
Botswana	X				X			
DRC		S			X			
Comoros				X				X
Lesotho	X				X			
Madagascar				N				X
Malawi				X	X			
Mauritius				X				X
Mozambique				N				Central + N coasts
Namibia	X							Ext S coast
Seychelles	X							SW+SE isles
South Africa	X							W + E coasts
Swaziland	X				X			
Tanzania		S						Coast and isles
Zambia			NE		X			
Zimbabwe	X				X			

RSMC PRETORIA ROLE IN SWFDP-SA

World Meteorological Organisation
Weather - Climate - Water

Regional Specialised Meteorological Center (RSMC) Pretoria

Designated to
South African Weather Service

Guidance Products

NWP & EPS Products

Regional Models

- UM SA12
- Aladin La Reunion

Global Products

- NOAA_GFS
- ECMWF_FFS
- Met Office EPS
- NOAA_EFS
- SAWS_FFS (NOAA)

Training Website

- Met-eLearning

SWFDP Training Nov 2012

- GOPFS
- PWS

SWFDP Training Nov 2013

- GOPFS
- PWS

SWFDP Training Nov 2014

- GOPFS
- PWS

RSMC Guidance Archive

Contact RSMC

Logout

Guidance Products

Short-range (1-7 Days)

- Map Day 1
- Map Day 2
- Risk Tables
- Discussion

Medium-range (3-5 Days)

- Map Day 3
- Map Day 4
- Map Day 5
- Risk Tables
- Discussion

SWFDP Evaluation Form

- Click Here

Nowcasting Products

Satellite-Based Rainfall

Convective Thunderstorm Forecasts

Hydro-Estimator Rainfall Totals

- 1hr
- 3hr
- 6hr
- 24hr

Hydro-Estimator Rainfall Totals In Days

- 10 Days
- 30 Days
- Archive
- Description of Product

Hail Forecasts from UM SA12

- 10 UTC
- 12 UTC
- 14 UTC

Lightning information

- Forecast Today
- Forecast Tomorrow

Probability of Convective Thunderstorms

- CU
- Description of Product

Rapidly Developing Thunderstorms

- RDT SADC
- Description of Product
- RDT SA

Hydro-estimator Storm Tracks

- SADC
- SADC NW
- SADC NE
- SADC SW

Flash Flood Guidance

- SARFTG Portal

Regional and International Centers

- ECMWF
- NCMP
- UK Met Office
- WMO
- RSMC - Reunion
- ACHAD

SADC Countries

- SADC Countries National Meteorological Services

Other Services and Products

- Short-range
- Long-range (seasonal)

- Guidance material are made available at <http://rsmc.weathersa.co.za/login.php>
- Archived for case studies
- RSMC issues Guidance, countries take final decision on warning
- All tools used at RSMC are available for participating countries via website
- RSMC forecaster provides daily guidance for 5 days ahead.

RSMC PRETORIA ROLE IN SWFDP-SA

- **Current Guidance main weakness could be the use thresholds**
- **Thresholds for possible disaster may change depending on the pre-existing conditions**
- **Individual countries are however free to use local threshold**
- **Warnings based on impacts would be a better solution, like flash flood warnings**



Thank You

Doc Ref no: FCAST-PRE-
SWFDP-20131113-001.1